



The Leader of Chinese Intelligent License Plate Recognition System



- ★ Intelligent Parking Lot System
- ★ Intelligent License Plate Recognition System
- ★ Intelligent Parking Management System
- ★ Intelligent Access Control Turnstile

Anxia Heavy Industrial Co., Ltd.



Tel : +86-0755-27611415 Mob : +86-13428910081

Fax : +86-0755-27764690

Web : www.anxiagroup.com

E-mail : sammy@anxiagroup.com

Add. : Anxia Industrial Park, No.8 Tangkeng Road, Shiyan Street, Bao'an District, Shenzhen



COMPANY PROFILE

Shenzhen Anxia Heavy Industrial Co.,Ltd was found on 2008,Is the intelligent system solutions and management systems equipment professional R & D, manufacturer and suppliers.Products include Intelligent Parking cloud systems, intelligent license plate recognition systems, smart Turnstile access control systems, intelligent consumer systems, intelligent anti-static system, ID card and Face recognition 2 in 1 system.By now we are serving not only in China,even all over the world.

Putting clients on the most important position is our concept and leading the industry and innovate the technology are our goal,We stick to the tenet as " the finest credit, the best quality, the excellent service" , hold the spirit of " united, honesty, creative" , warmly welcome all the friends comes form all over the world to develop and negotiate together!

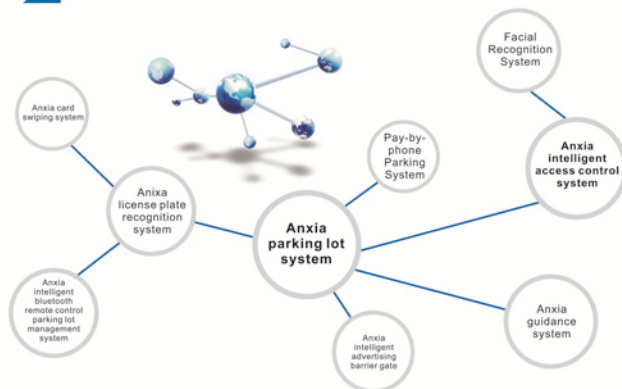
HONOR



STAFF PRESENCE



CORE TECHNOLOGY



CUSTOMER PICTURES



Intelligent Parking Lot System



The smart parking lot industry has entered a period of rapid development in recent years, and the traditional parking lot system has been unable to meet the diverse needs of consumers. From traditional single entrance control to today's automatic parking, license plate recognition, unmanned charges, and so on. The development trend of intelligent parking lots has the following aspects:

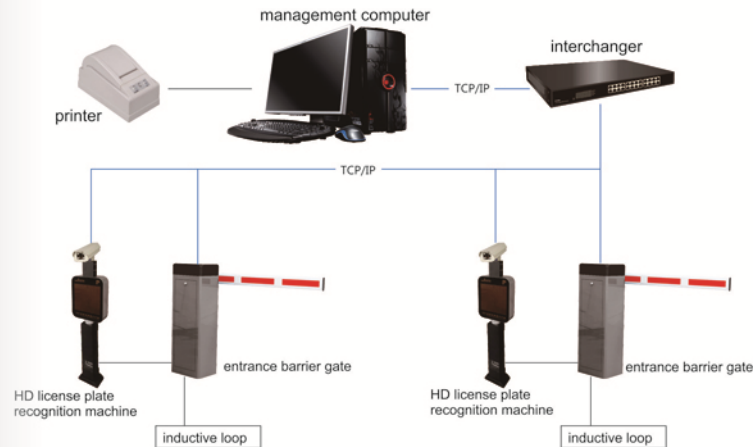
1. Network sharing data, breaking information islands, building smart parking Internet of Things platform, enabling parking guidance, parking space reservation, electronic automatic payment, fast access and other cloud parking functions
2. The unmanned service is gradually popularized, the labor cost is increasing, the human tactics are outdated, the participation of smart phones and mobile Internet, the future smart parking lot must be highly unmanned management.
3. Traditional card-to-license recognition, simplifying and simplifying, gradually abandoning the habit of the owner to enter and leave the card, to achieve automatic identification of the license plate, improve efficiency, avoid multiple users using the same card, and other issues.

The development of smart parking lots in China is getting better and better, and the whole day is on the rise. Pressing technology as the leader in the technology of China's parking lot industry has always kept close to the market demand, and the products are new and stand on the top of industry development.

Five Major Selling Points of Anxia License Plate Recognition

1. **Hardware identification:**
that is, it is completely different in the camera, and then the recognized license plate information is transmitted to the software for comparison analysis;
2. **Digital network camera integrated machine:**
that is, camera photo recognition module is combined, easy to install and maintain;
3. **The monthly car can be used offline:**
there is a storage chip, which can transfer the information of the monthly car to the one machine. It is very convenient without a computer, especially convenient for units or communities without temporary vehicles;
4. **High recognition rate:**
the recognition rate of license plate recognition system developed by our company is over 99%;
5. **Virtual sense of ground:**
no need to change the sense of the ground, but through the software virtual one license plate recognition area, you can achieve the real sense of the effect, greatly reducing the construction difficulty.

Topological Graph



License Plate Recognition System With Boom Barrier



▲ Golden Color



License plate recognition system with boom barrier (D type)

Main Function:

1. Integrated HD license plate recognition, recognition rate >99.99%
2. Integrated parking controller, charging, display, voice, switch
3. Integrate 4 lines and 4 words to display large screen, display identification vehicle information, and publish advertisements
4. Integrated highlight fill light
5. Support TTS universal voice broadcast, users can set personalized voice
6. Support top communication
7. The display can be rotated 30 degrees left and right
8. Multi-punch waterproof, dustproof, anti-shake design, user safety and peace of mind
9. Highly integrated (only one power supply, one communication line, one open brake line)
10. Appearance is noble, stylish, atmospheric

▲ Silver Color



License plate recognition system with boom barrier (E type)

Parameter Description:

Operating voltage: AC 220 V
 Working environment temperature: -25 ° C - 60 ° C
 Relative humidity: <=95%
 Communication interface: Rs485
 Longest communication distance: 1200 meters



License plate recognition system with boom barrier (A type)

Main Feature:

1. Four-layer outdoor waterproof, dustproof, release display large screen
2. Integrated parking control panel, voice version
3. Open the gate, display, voice integration
4. Display 2 lines and 8 words
5. Support 220V household electricity
6. Support 485, TCP communication at the same time

Parameter Description:

Working voltage: AC 220V
Working environment temperature: -25 ° C - 60 ° C
Relative humidity: <=95%
Communication interface: Rs485
Longest communication distance: 1200 meters



License plate recognition system with boom barrier (C type)

Main Feature:

Display type: double layer (8 words), single layer (2 words)

Effects: Immediate display, scrolling from right to left, automatic line feed display, scroll up display

Display mode: text display, clock display

Size: 163*40*20

Main Function:

1. Integrated HD license plate recognition, recognition rate >99%
2. Integrated parking controller, charging, display, voice, switch
3. Integrate 4-line 4-word large screen, display and identify vehicle information, and publish advertisements
4. Integrated highlight fill light
5. Support TTS universal voice broadcast, can set personalized voice
6. Support TCP communication
7. The display can be rotated 30 degrees left and right
8. Multiple waterproof, dust-proof, anti-shake design, user safety and peace of mind
9. Appearance is noble, stylish, atmospheric time



License plate recognition system with boom barrier (F type)



License plate recognition system with boom barrier (B type)

Parameter Description:

Working voltage: AC 220V
Working environment temperature: -25 ° C - 60 ° C
Relative humidity: <=95%
Communication interface: Rs485
Longest communication distance: 1200 meters

Main Feature:

Display type: double layer (8 words), single layer (2 words)

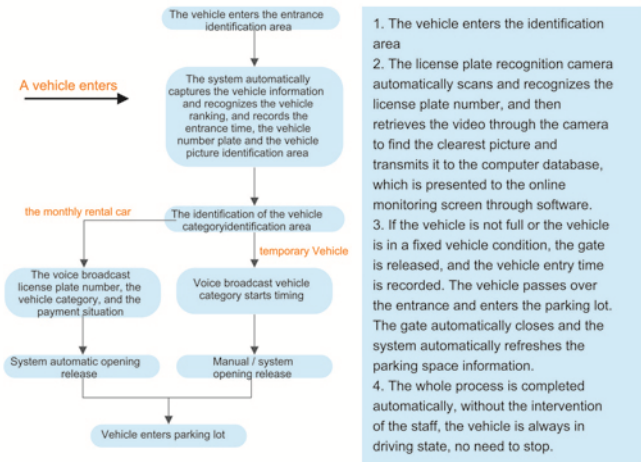
Effects: Immediate display, scrolling from right to left, automatic line feed display, scroll up display

Display mode: text display, clock display

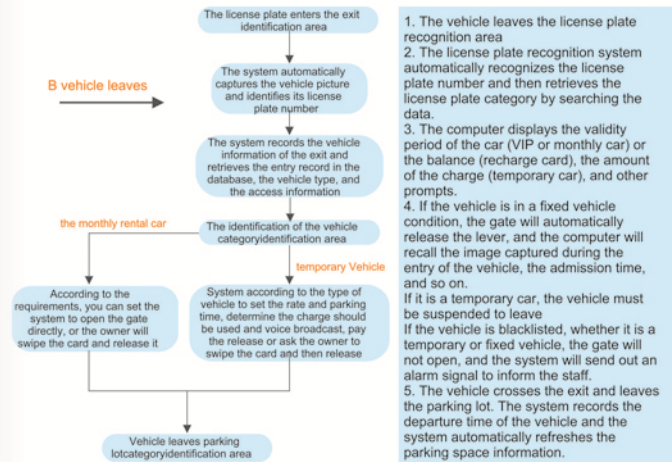
Size: 163*40*20

License Plate Recognition System Flow Chart

Entrance schematic



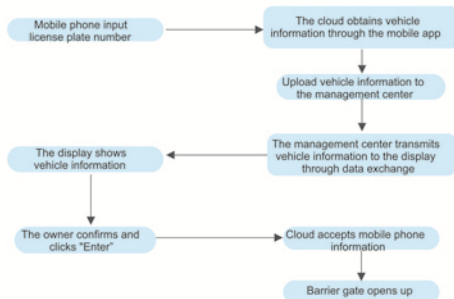
Export schematic



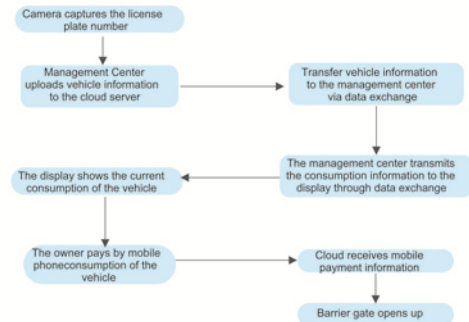
Intelligent Cloud Parking System



Vehicle entry process



Vehicle exiting process



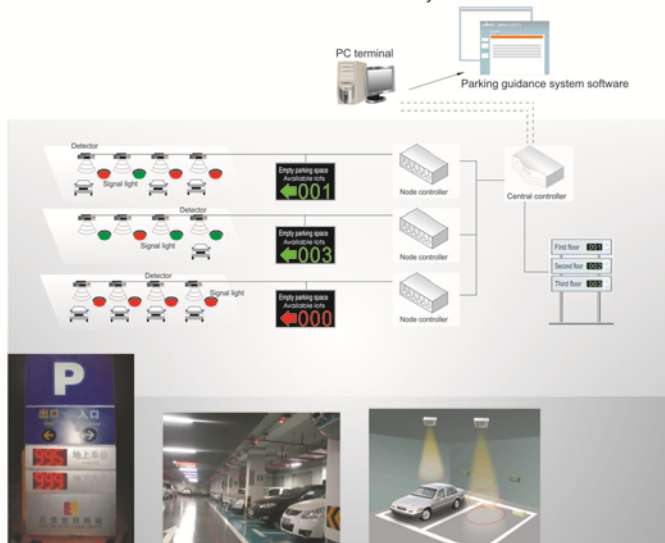
Parking Guidance System

Advantages of Parking Space Guidance System

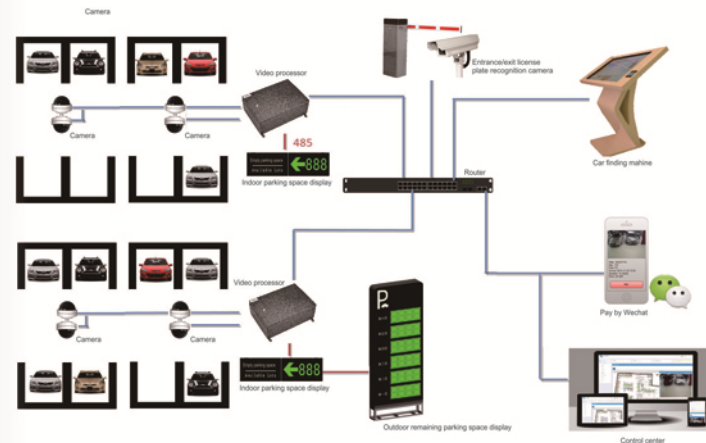
1. With the parking lot of the Anxia parking space guidance system, the driver can find the empty parking space accurately and safely through the eye-catching guide screen.
2. Improve the utilization rate of parking lots, better manage parking lots, reduce the operating costs of large and medium-sized parking lots, and greatly improve social and economic benefits. Eliminate parking troubles for customers, easy parking, save time and improve efficiency. It is one of the necessary systems for advanced parking, and it is a comprehensive manifestation of strength.
3. The parking guidance system is fully humanized from the nuances, making the parking management level even further.

Functional Schematic

Ultrasonic car finder system



Video Car Search System



Car Searching Terminal

- ◆ Check the parking position of the vehicle according to the license plate number or parking time to avoid searching for your own vehicle for a long time.
- ◆ Improve customer satisfaction, thereby improving customer return rate
- ◆ Because of reducing the time for finding vehicles, it improves the turnover rate of parking lots and improves the turnover rate of parking spaces.



Intelligent Parking Lot

Cool Blue Series



Optional colors
 red
 orange
 gray

System Features

1. It can be combined with the in/out card reader at the same time, and the fixed vehicle can realize the non-stop card reading and manage it more scientifically.
2. Real-time dynamic monitoring equipment, real-time monitoring of the status of the card machine and the number of stored cards, and display on the screen
3. The security of funds, the system records illegal incidents (such as automatic opening, manual opening, etc.), can be monitored, effectively avoiding the loss of funds due to negligence or intentional cheating of the duty officer
4. Can be offline, off-network operation, the system can still work normally in the case of network or computer failure; when the computer and network are repaired, the offline records in the control will be automatically uploaded to the computer for saving, effectively Guarantee system runs 24 hours a day
5. Other expansion functions: support central charging function, automatic license plate recognition (car and card binding)

Sharp Arrow Series



Optional colors
 red
 orange
 gray

System Features

1. Support a variety of readers: IC card, EM card (remote card reader)
2. When a card is bound to a car, the vehicle can be set to do not repeat the card reading function. When the vehicle reads the card, the card cannot be read repeatedly. The vehicle must leave the gate and close the channel, and the subsequent vehicle can read the card.
3. Real-time dynamic monitoring device, real-time detection of the working status of the machine and the number of stored cards, and display on the screen
4. Can be offline, off-network operation, the system can still work normally in the case of network or computer failure; when the computer and network are repaired, the offline records in the control will be automatically uploaded to the computer for saving, effectively Guarantee system runs 24 hours a day
5. Other expansion functions: support central charging function, automatic license plate recognition (car and card binding).

Advertising Door

Product Description

The pedestrian channel advertising door is a new product integrating traditional iron gates and advertising light boxes. Advertising doors are suitable for: residential areas, scenic spots, commercial centers, stations, etc.



Product Features

- Low consumption, standby power less than 6W, working power 45W
- Ultra-quiet, the noise is lower than 55db when working
- High strength, can withstand 200kg pull
- Support multiple signal inputs, relay signals, voltage signals (5-24V)
- Current overcurrent, overvoltage, overload, short circuit protection
- Intelligent resistance, push the door to flip
- Motor current, thrust, speed can be precisely adjusted

<p>Automatic door (double door)</p>	<p>The automatic built-in drive clicks and uses the gear set to decelerate, which can rotate 180 degrees forward and backward, and the left and right open doors are not restricted. According to the scene, you can change the position of the magnetic lock at will. Automatic control system, stable operation and good stability.</p>
<p>Manual type (single open door)</p>	<p>Manual type, using the door closer to control the direction of the switch, by adjusting the door closer pressure reducing valve, it can smoothly slow down the door opening effect.</p>
<p>Telescopic type (freely adjust the width of the door)</p>	<p>The telescopic section adopts a telescopic structure of the door body, and can flexibly adjust 50 cm according to the width of the channel, and the middle gap portion can be correspondingly increased/decreased.</p>

Regardless of manual type, automatic type, and telescopic type, it can control the identity of incoming and outgoing personnel, and can be combined with the access control system to increase safety.

Product Features

The intelligent access door is an automatic door controlled by an electromagnetic lock. The door body adopts outdoor environmental protection and anti-rust treatment, anti-corrosion, anti-collision, high-end appearance, and improve the community level. The motor drive of the advertising door is fine, low energy consumption, superior performance, standby power less than 6W, working power 45W. Use double-sided tempered glass light box advertisement, easy and quick to disassemble and replace, more energy-saving and energy-saving. Access control system module design, good stability, strong function, support a variety of door opening methods: password, IC card, remote control, etc. Low noise, long service life, ultra-quiet, less than 55db when working. The double-sided screen is close to 1 square meter, and the LED light source is evenly illuminated to attract the eye.

Advertising Barrier Gate

Product Description

Advertising gate is a unique and used high-quality new media. It refers to special alloy plane advertising carriers hanging on the gates of urban real estate, community, Shangxia, hotels, parking lots, etc.



Product Parameters

Product model: AX-DS-B0
 Center height of upper beam: 1050 mm
 Working voltage: 220V±10%/50Hz
 Remote control distance: ≤30m
 Input interface: +12V level signal or
 Operating ambient temperature: -25 °C ~ 60 °C
 Communication interface: RS485 electrical standard
 Relative humidity: less than or equal to 95%
 Outer box dimensions: 850x420x1300 mm
 Road gate length: 2.5m, 2.8m, 3.2m, 3.5m, 3.7m
 Chassis screen size: 500mm x 1000mm
 Replica screen size: 2150 x 830mm, 2450 x 830mm, 2860 x 830mm, 3100 x 830mm
 Lifting time: generally 4 seconds (special requirements can be customized)



Standard model (powered type)

The standard model (powered type) uses the electric drive to pass the motor inside the brake lever. The brake dry motor is connected to the advertising gate drive shaft. Before the landing gear, the brake motor drives the motor to rotate the advertising surface to 90. Degree again. This kind of traditional operation using the motor to pull the flap can increase the anemometer, battery, and drive battery, so that the advertising gate can more play more features and performance is more prominent.



Simple style (no power type)

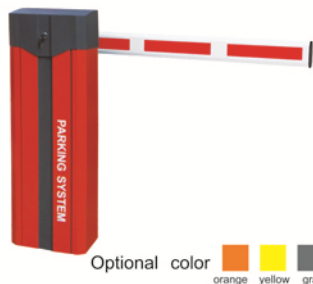
The simple type (no power type) uses mechanical transmission (no power drive), and the lever is turned over again. The mechanical operation mode, each component is work alone, the installation and maintenance are relatively simple, the landing speed is about 2 seconds faster than the motor drive, and there is a problem with one blade, which will not affect the overall operation.

Main Features

1. The chassis is durable and waterproof, and can be used in outdoor environments.
2. The shape is simple and generous, the light box with the best perspective is in the advertising space, the layout is detachable and the operation is simple.
3. Chassis advertising light box has fixed screen, scrolling screen, LCD screen playing three, a variety of options.
4. Advertising light box and flip board are equipped with LED lights, turn off the lights during the day, turn on the lights at night, adjust the time period, save energy and save energy
5. Easy to operate, flexible, safe and reliable
6. A variety of control modes are available for the user to select, and the external control box button can be used to realize the manual control of the gate, and the remote control device can also be selected to remotely control the gate.
7. The use of multiple protection measures (wind protection, motor thermal protection, anti-surge protection, anti-lightning protection), the safety and reliability of the gate operation is greatly improved.
8. In addition to the general interface gull, the system adds other protective equipment such as air pressure waves, so that the system has anti-mite function.
9. It has the function of "automatically falling off the car after the car has passed" and "automatic lifting of the lever when the vehicle passes" to improve the automatic closing function.
10. Has a directional function to effectively improve vehicle efficiency
11. The system uses a standard electrical interface to facilitate connection with other systems selected by the user.
12. All moving parts have been adjusted to the best balance, stable operation, low noise and long service life.

High-speed Barrier Gate

AX-G307



Optional color
orange yellow gray

Performance Characteristics

The operation mode is manual or remote control, accepting the card signal lifting, combined with the ground sense coil;
The pole lift is gentle and reliable, and the adjustable time is 1.5~6 seconds;
The unique manual clutch device is light and compact, and the pole can stay at any angle;
Made of pure copper movement;
Infrared sensor anti-tamper function;
Support external and built-in sense;
With a time-delay function;
Fast heat dissipation to prevent crashes due to overheating of the movement;
The shape of the chassis is treated with a special process to reach the highest level in the industry.

AX-G308



Optional color
red blue gray

Technical Parameters

Power supply voltage: 220V/±%
Voltage frequency: 50/60Hz
Rated power: 90W
No-load speed of the motor: 1400 rpm
Self-contained pole with resistance rebound function
Traffic light interface: (220VAC)
Remote control distance: ≥ 30 meters
Rod length: within 6 meters, within 5 meters of folding rod
Rod material: aluminum alloy
Chassis size: 350 x 280 x 1060mm
Pole size: 100 x 45 mm
Average number of failures: greater than or equal to 3 million times
RS485 interface optional
The following types of lever gates are available:
Folding arm (1-5m) Fence pole (1-5m)

AX-G306



Technical Parameters

Standard color: orange, gray
Chassis size: 350x350x1050 mm
Can be equipped with: octagonal pole below 4 meters
Speed: 1.5~4 seconds
Ambient temperature: -25°C~60°C
Relative humidity: 5%~95%
Voltage: 200V/50Hz
Remote control distance: 30m
Dimensions: 405x292x1019mm
Installation size: 235x235x172mm
Power: 150W
Gate center height: 880mm
Gate type: standard straight rod
Communication protocol: RS-485 interface, up to 1200 meters
Working power supply: AC220V±10%V (50Hz)

High-speed Gate Performance Characteristics

Turbo drive, simple structure, durable, stable and reliable
State-of-the-art balancing mechanism ensures smooth, balanced operation
Modular design, standard terminal block output strong and weak electrical partition separation, full circuit non-contact control, ensuring reliable operation
An anti-mile control system is added to ensure the safety of the vehicle, and the emergency department is manually lifted and lowered;
Control input/output sections use optocoupler relays to block electrical shock
The gate lift time is only 1.5 seconds
3 million service life, no pollution, no wear, no need for lubricant maintenance
The ground sense coil controls the automatic drop lever after the vehicle has been tested, and has the function of preventing the brake.



Gate Identification Integrated Machine



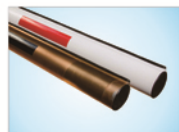
Technical Parameters

Size: 1780 * 340 * 280 mm
Voice prompt: collected voice by real human
Data communication: Ethernet communication interface
Words display mode: scroll up/scroll down / horizontal scroll
Digit display mode: 4 digits
LED light attenuation: ≤5%/10000hour (25°C, current: 20mA)
Installation angle: adjustable
LED visual angle: ±35° ±20°
LED average life span: ≥500000 hours
Input voltage: AC 200~250V, 50Hz
Working temperature: -20 ~ 65°C

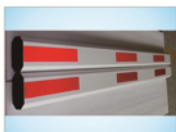


Housing Parameter

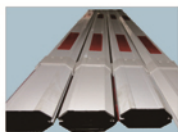
Housing material: stainless steel with varnish stoving
Working temperature: AC220V $\pm 10\%$, 50 Hz
Motor type/ rated power: DC variable frequency motor/140 W
Life span: ≥ 2 million times
Torque: 70 N*m
Running time: 1 ~ 6 seconds, adjustable
Housing size: 350mm * 280mm * 1060mm
Working temperature: $-40^{\circ}\text{C} \sim 75^{\circ}\text{C}$



Oval shape arm



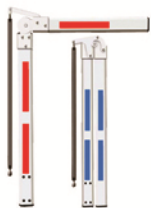
Octagon shape arm



Retractable arm



Barrier



Folding arm

Arm Parameter

Arm shape: Oval/Octagon
Arm type: straight arm/ folding arm/ barrier
Color: red&white/ blue&white/ black&yellow/ gold
Material: Aluminum alloy, with surface spray treatment
Arm length: 1 ~ 6 meters adjustable, 3 ~ 6 meters for (Retractable arm)
Thickness: 1.2 mm

Cylinder Face Recognition System



Screen	Size: 5 inch, 170°IPS Liquid Crystal Display Resolution: 480 * 854
Camera	Pixels: 2 mega pixels Type: RGB camera Aperture: F2.4 Focal length: 6 mm White balance: Automatic Wide Dynamic: Supports
Core Parameter	CPU: Quad Core, 1.8 GHz Device interface: RAM 2GB, storage capacity 8GB
Interface	Audio: 1 channel audio output Video: 1 channel HDMI 2.0 Type-A Serial communication interface: 1 RS232C interface Relay output: 1 relay interface Reset interface: With RESET button on the extension cord Internet interface: 1 RJ45 10M/100M adaptable Ethernet interface
Function	Face detection: Support detecting/tracking 5 persons at the same time 1: N face recognition: When false recognition is 0.03%, Face recognition accuracy is 99.7% Stranger detection: Support Recognition distance configuration: Support UI interface configuration: Support Device remote upgrade: Support Deployment method: Support public network, LAN
General Parameters	Protection level: IP42, with a certain dust-proof /water-proof function Power supply: DC12V ($\pm 10\%$) Working temperature: $-10^{\circ}\text{C} \sim 60^{\circ}\text{C}$ Working humidity: 10%~90% Power: 10 W Max Device size: 560 * ϕ 114mm (Height * Diameter) Weight: $\sim 5\text{kg}$

Cylinder Face Recognition System

Product Features

- 1, support for external large screen;
- 2, Dynamic double-camera identification for anti-counterfeiting, completely solving the deception of photos;
- 3, With night infrared, RGB light;
- 4, Support the insertion of 4G network card wireless Internet access;
- 5, Support the storage of 100,000 face photos, 1 million identification records;
- 6, Support 1:1 face comparison, and 1:N face recognition;
- 7, 1:N recognition accuracy is high, the face database is 10,000 (recommended face database is not higher than 10,000), there is only one in ten thousand false recognition
- Rate, passing rate is 97%, and 1:1 face recognition accuracy rate reaches 99.7%;
- 8, The recognition speed is fast, face tracking and detection takes about 20ms, face feature extraction takes about 200ms, face comparison takes about 0.1ms;
- 9, Support stranger detection, stranger's level can be configured;
- 10, Support the preservation of live photos when taking face recognition or stranger detection;
- 11, Support multiple deployment modes such as public cloud, private cloud and local area network;
- 12, Support the interface and support the building system;
- 13, Support identification distance configuration;
- 14, Support screen display content configuration.



Product Parameter

Housing material: aluminum alloy
Size: 120mm*217mm
Camera: 2 mega pixel HD imported camera
Working temperature: $-10^{\circ}\text{C} \sim 60^{\circ}\text{C}$
Working humidity: 10% to 90%
Power consumption: 10W
Installation method: wall bracket installation, turnstile bracket installation
Fill light: infrared, LED light

System: Android
CPU: quad core 1.8GHz
Display: 7-inch IPS LCD screen
Power: DC12V
Weight: $\sim 2\text{KG}$

Intelligent Channel Gate

Speedy Turnstile



Features

1. Adopt industrial grade 32-bit ARM chip, fast response speed and greatly improved processing capacity
2. Using electromagnetic clutch device
3. Angle detection and control by angle encoder, greatly improving the accuracy of the swing angle
4. After swiping the card, the swing arm opens to prompt the pedestrian to pass. After the pedestrian passes, the swing arm automatically closes.
5. If the swing arm is not open, if the swing arm is forced into the swing, the swing arm swings beyond a certain angle and is immediately unlocked to avoid the break of the swing arm and the damage of the traditional swing gate.
6. Anti-reverse, after the card is swiped, only pedestrians are allowed to travel in one direction; if they pass in the opposite direction, an alarm will be issued, and in some cases the swing arm will close quickly.
7. The speed can be adjusted according to the requirements of different places. The switch used for adjustment is built in.
8. After obtaining the permission, if it does not pass within the set time, the access permission will be automatically canceled and the initial state will be restored.
9. Use several pairs of infrared probes to detect various travel states
10. After the power is cut off, the swing arm is in a state of no resistance.

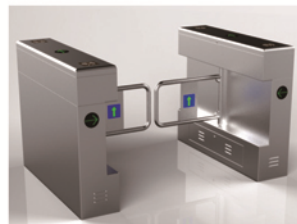
Swing Gate Series



Model: AX-B001
Channel width: ≤900 mm
Size: 1200 x 280 x 990 mm



Model: AX-B005
Channel width: ≤900 mm
Size: 1200 x 280 x 990 mm



Model: AX-B003
Channel width: ≤900 mm
Size: 1200 x 280 x 990 mm

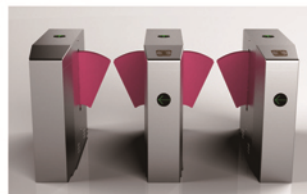


Model: AX-B006
Channel width: ≤900 mm
Size: Φ168 x 600 x 1050 mm

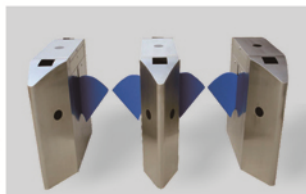
Features

1. Use IC card, ID card, magnetic card or barcode card as automatic identification system to realize access control, attendance or charging function
2. With fault self-test and broadcast function, it greatly facilitates the maintenance and use of equipment.
3. With normally open and normally closed working mode
4. With card memory, why not with memory, users can set online
5. With automatic reset function, after the card is read, when the pedestrian does not pass the time specified by the system, the system automatically passes the permission this time, and the reset time value can be set online.
6. With direction indicator, display the current status of the channel to pedestrians, guide pedestrians correctly, and quickly pass
7. After the system is powered off, the manual opening function is that the channel gate is open and the barrier-free state is formed.
8. Several pairs of infrared probes are used to detect various travel states, protect pedestrians from passing smoothly, and have anti-tailing function.
9. Can be used in the same system as other styles of channel gates
10. It has a unified and standard external electrical interface, which can be connected with other reading and writing devices for easy integration and remote control and management through management computer.

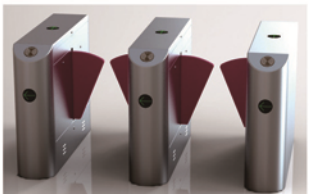
Wing Turnstile Series



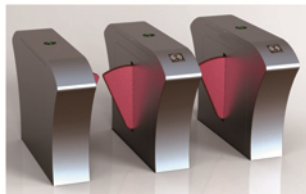
Model: AX-Y002
Channel width: ≤600 mm
Size: 1200 x 280 x 990 mm



Model: AX-Y001
Channel width: ≤600 mm
Size: 1200 x 280 x 990 mm



Model: AX-Y007
Channel width: ≤600 mm
Size: 1200 x 280 x 990 mm



Model: AX-Y008
Channel width: ≤600 mm
Size: 1200 x 280 x 990 mm

Turnstile Parameter

Structure: 304# stainless steel frame structure and sprayed plastic case

Turning of the gate: one-way / two-way

Anti-reverse: with anti-reverse function to ensure one card per person

Power supply: AC198V~248V, 50Hz±4%, Output: AC24V, DC12V

Machine consumption: less than 30W when working

Outdoor: It is recommended to have a ceiling above the gate. When the relative humidity of the environment is less than 45%, the relevant maintenance staff should wear an anti-static wrist strap to open the chassis.

Passing speed: 35-45 person/minute

Machine life: 10 years (not consumables)

Maintenance port: 1

Net weight of gate: 100kg (excluding control equipment)

Tripod Turnstile



Model: AX-S005
Channel width: ≤600 mm
Size: 1200 x 280 x 990 mm



Model: AX-S003
Channel width: ≤600 mm
Size: 1200 x 280 x 990 mm



Model: AX-S001
Channel width: ≤600 mm
Size: 420 x 330 x 960 mm

Features

Use IC card, ID card, magnetic card or barcode card as automatic identification to achieve access control, attendance or charging function

With fault self-test and broadcast function, it is convenient to maintain and use equipment

With normally open and normally closed working mode

With card memory, and without memory function, users can set online

With automatic reset function, after the card is read, when the pedestrian is in the time specified by the system, the system automatically cancels the access permission, and the reset time can be set.

With direction indicator, I want the pedestrian to display the current status of the channel, guiding pedestrians to pass quickly.

With anti-tailing function, organize pedestrians to enter illegally

Can be used in the same system with other styles of channel gates

It has a unified and standard external electrical interface, which can be connected with other reading and writing devices for easy integration and remote control and management through the management computer.

Technical Parameters

Channel width: single pendulum ≤600 mm

Power supply voltage: AC220±10%V, 50Hz

Working environment humidity: -15 °C ~ 60 °C, indoors, outdoor use

Inspection port: one

Passing speed: 30 person/minute, gate opening/closing time: 1.2 seconds

Half Height/ Full Height Turnstile



Model: AX-Z005
Channel width: s600
Size: 1400 x 1400 x 1200 mm



Model: AX-Z001
Channel width: s600
Size: 1630 x 1500 x 2300 mm



Model: AX-Z006
Channel width: s600
Size: 2450 x 1500 x 2300 mm



Model: AX-Z006
Channel width: s600
Size: 3300 x 1500 x 2300 mm

Automatic / Manual Parking lock



PL-001

Product Parameter

Voltage DC: 12V
Battery DC: 12V 7Ah
Dimension(Standing up): 470 mm L * 390 mm W * 390 mm H
Weight: 9KG(G.W) / 8.4KG(N.W)
Running Time: 4 - 6 s
Remote Control Distance: 15m
Battery Charge Frequency: About 6 months
Bearing Weight: 5T
Operation: Automatic



PL-002

Product Parameter

Voltage of working motor: 12Volt DC
Battery: 12Volt 7.0Ah
Power Consumption (operation): 20W
Power Consumption (standby): 30mW
Distance of remote control: 15 m
Running time: 5-6 s
Dimensions (standing up): 720mm L * 200mm W * 300mm H
Dimensions (flat): 720mm L x 200mm W x 100mm H
Net weight: 12kg
Operation: Automatic



PL-003

Product Parameter

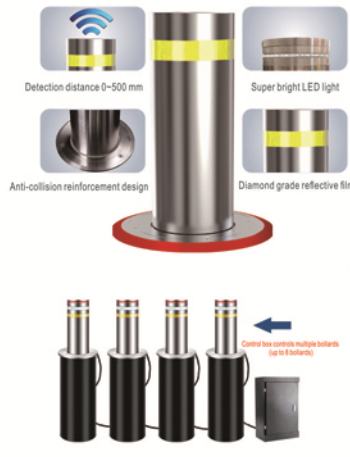
Dimensions(Standing up): 570 mm L * 500mm W * 300 mm H
Net weight: 7 kg
Height when standing up: 300 mm
Height when laying down: 50 mm
Operation: manual L x 200mm W x 100mm H
Net weight: 12kg
Operation: Automatic

Smart automatic bollard

Product performance characteristics

1. It adopts 304 stainless steel materials with galvanizing and spray treatment, and the corrosion protection period is more than 20 years;
2. Each component can be assembled and disassembled by screws during maintenance and repair without destroying the embedded foundation;
3. assembly structure, the embedded bucket can be used permanently;
4. In case of power failure or failure, ballards can be manually lowered to the horizontal position to allow the vehicle to pass;
5. using 3M diamond-grade reflective film, the reflectivity can reach more than 85%;
6. Remote control device: Remote controllers can be used to lift and lower the bollards within the range of 30 meters around the controller;
7. Optional radar detection function can protect the safety of passing vehicles and diamond grade reflective film pedestrians during the rising process of bollards;
8. It can be linked with other intelligent control systems, such as Internet, Safe City, and intelligent parking lot management system.

Dimensions



Control box

1. The control box is stable and prevents accidents caused by malfunctions;
2. Up to 8 sets of rising bollards equipment can be managed and controlled, and each rising bollard can be controlled separately;
3. With anti-terrorism emergency, fire emergency response function, in an emergency, can be forced to rise or fall;
4. With infrared, radar, ground sense and other vehicle detection and protection functions, can achieve unattended intelligent management.



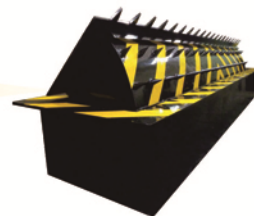
Flipping roadblock

Product performance characteristics

1. The equipment has its own electro-hydraulic integrated power unit to effectively prevent oil leakage, and the construction and maintenance are simple and convenient;
2. the rising speed is fast, the rising time is 1s-2.5s optional;
3. The normal use of the rolling roadblock function by the vehicle;
4. Each component can be assembled and disassembled by screws during maintenance and repair without destroying the embedded foundation;
5. The assembled structure and the pre-embedded box can be used permanently;
6. the installation of super bright LED lights, to play a warning and lighting at night.
7. using 3M diamond-grade reflective film, the reflectivity can reach more than 85%;
8. It can be linked with other intelligent control systems such as Internet, Safe City, and intelligent parking lot management system;
9. With infrared, radar and ground-sensing linkage function, it can protect the safety of passing vehicles and pedestrians during the rise of roadblocks;
10. The lifting and lowering buffer technology runs more smoothly, reliably and quietly.



Made of 304 stainless steel
Spikes diameter 20 mm, spikes length 90mm-100mm
Screw-fastened for easy replacement



Tire breaker

Product performance characteristics

1. The structure is sturdy and durable, with large load, fast and stable action, low noise, and it can adapt to various working environments;
2. Using mechanical hydraulic driver, easy to install, easy to maintain, with high safety performance, and long service life;
3. Through the vehicle crushing tire can be used normally;
4. It can be linked with other intelligent control systems such as Internet, Safe City, and intelligent parking lot management system;
5. The hydraulic tire breaker can realize manual lowering in the power failure state, and does not affect the traffic;
6. With lifting buffer technology, running more stable, reliable, quiet;
7. It has the functions of infrared, radar and ground-sensing linkage, which can protect the safety of passing vehicles and pedestrians during the rise of roadblocks.

